

color selector for solid surface veneer

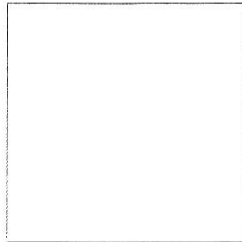


FLORIDA
11400 NW 36th Avenue, Miami, Florida 33167
P. 305/821-5700 F. 866/216-5300 email: florida@ampco.com

TEXAS
201 Railroad Avenue, Sanger, Texas 76266
P. 940/458-7401 F. 866/372-5300 email: texas@ampco.com

TENNESSEE
1200 Violet Street, Morristown, Tennessee 37814
P. 423/586-3993 F. 866/902-5370 email: tennessee@ampco.com

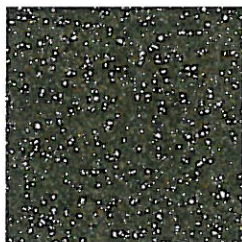
WASHINGTON
4520 B Street NW, Suite B, Auburn, Washington 98001
P. 253/852-5900 F. 866/323-5300 email: washington@ampco.com



8025-Powder



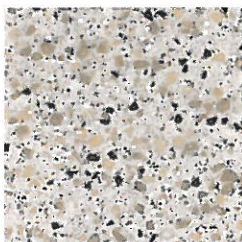
9032- Pumice



7830- Bronze

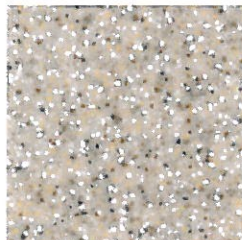


9116- Juneau

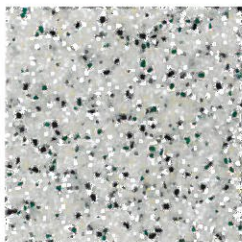


9144- Palermo

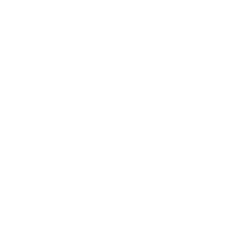
8020-Foam



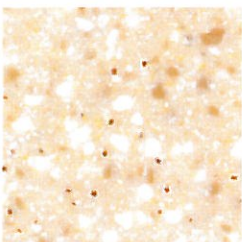
9030- Afternoon Beach



9054- Seaweed



9117- Kokoura

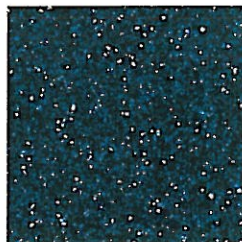


9130- Gold Bullion

8022-Cream



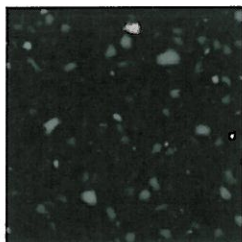
9012- Snowcap



7845- Infinity

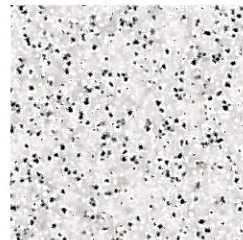


9137- Casablanca

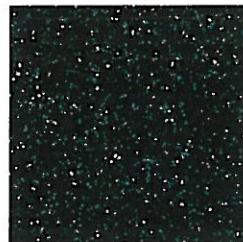


9125- Black Coral

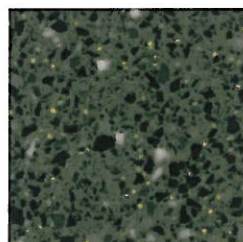
9015-Sparkling Water



9010- Silica



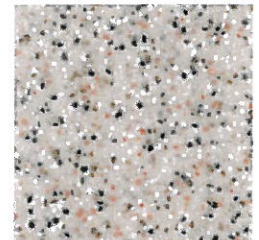
7820- Star Shine



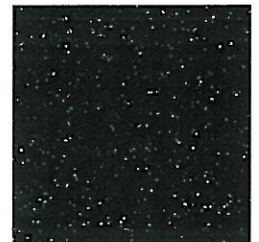
9154- Olivine



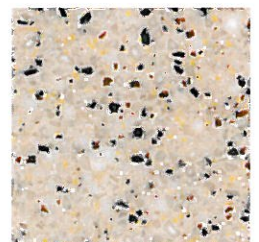
9031-SandCastle



9042- Reef



9021- Flint



9138- Fargo



Colors may vary from swatches shown. Actual samples are available upon request.

Lead credit applicable in some applications. Please check factory for more information. Solid Surface Veneer toilet partitions are manufactured in AMPCO Florida.

AMPCO manufactures High Pressure Laminate, Phenolic, Phenolic with PVC edging, Powder-Coated Steel, Stainless Steel, Solid Plastic, Solid Surface and Solid Surface Veneer Toilet Partitions and Architectural Flush Wood Doors.

For Quick Quotes

quote@ampco.com

Toll free fax for quotes: 1-866-216-5300

01/01/2010



www.ampco.com